



# Smart Home Camera

## Color Night Vision Camera.

The upgraded color night vision camera from EZVIZ, is embedded with an AI algorithm to provide the person detection and more precise alerts even in darkness. You can also have two-way conversations with your family or visitors wherever you are using the EZVIZ App on your mobile phone. Peace of mind, always at your fingertips.



**FHD** 1080p



Color Night Vision

**H.265** H.265 Video Compression



AI-Powered Person Detection



Customizable Voice Alerts



Two-Way Talk



IP67 Dust and Water Protection



Supports MicroSD Card (up to 256 GB)

## Full-color night vision like you've never seen before.

---

Your night vision is now lit up and vividly restored to full-color thanks to two built-in spotlights and professional optical lenses. So advanced that you can quickly identify details of interest – like the color of the car passing by!



Color Night Vision



Black & White Night Vision

## It also lights your way home.

---

The two spotlights are thoughtful. They not only make color imaging at night a reality but also offer outdoor lighting that you can turn on and off and even adjust their brightness as needed.





## Or, enable color vision when necessary.

If you don't need extra lighting, just switch the camera to the black & white night vision via the EZVIZ App and still see 30 meters (98 ft.) far. A third night vision mode is unbelievably smart – it automatically turns on the spotlights upon detection of suspicious motion, so both notifications and remote look-ins will be in full-color.



Color Mode



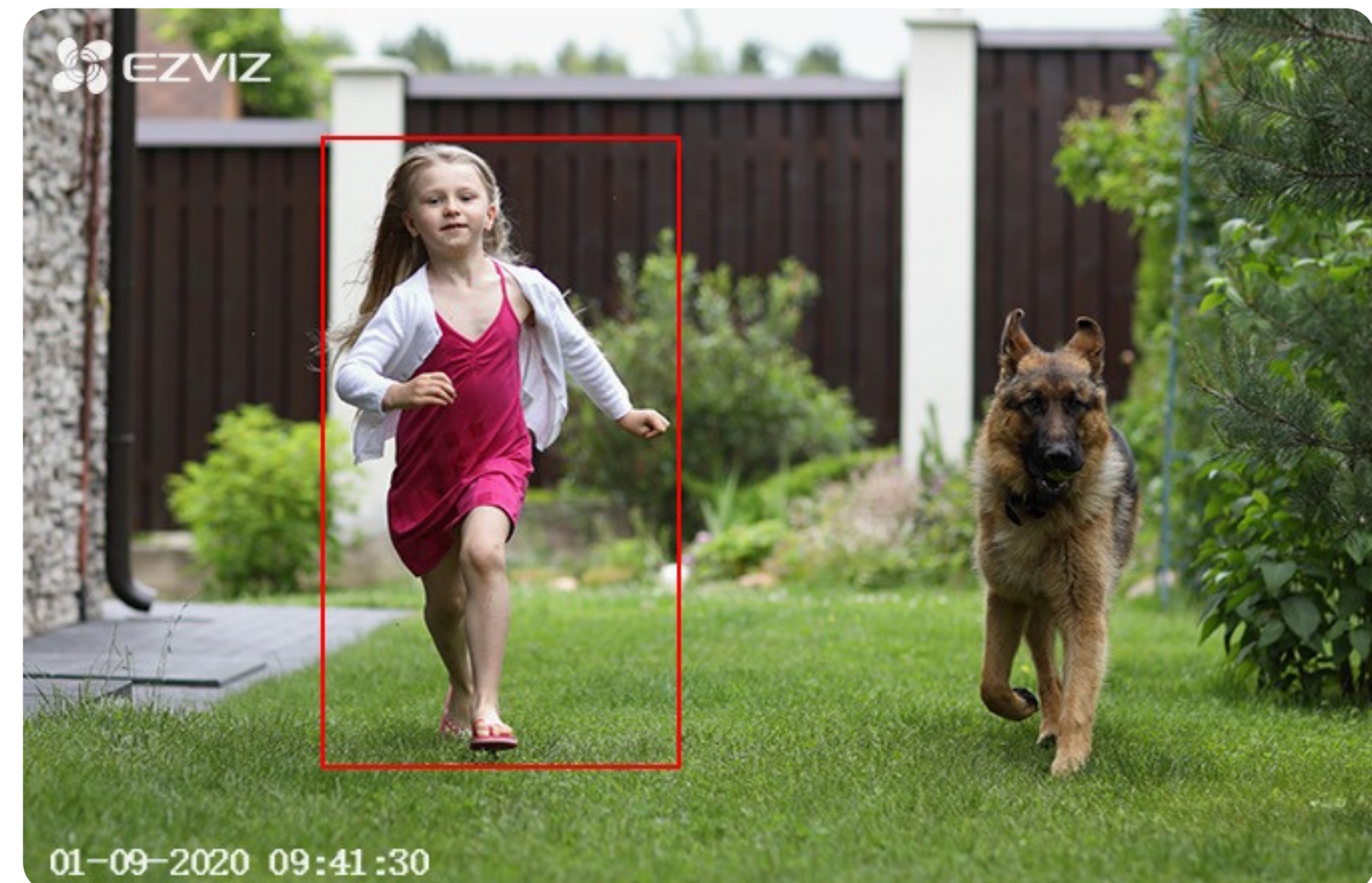
IR Mode



Smart Mode

## AI-powered person detection.

As an upgrade from simple motion detection, the embedded AI algorithm intelligently detects the motion of human shapes in real-time. When people enter your customized detection area, you will be alerted immediately.





## DIY alerts.

---

Along with default alert sounds, the camera also allows you to record three 10-second audio messages to either greet or deter visitors. Try something like, “Hello! Welcome!” Or perhaps, “Get away from my house!” It’s time to be creative!



## Talk, as if you were there.

---

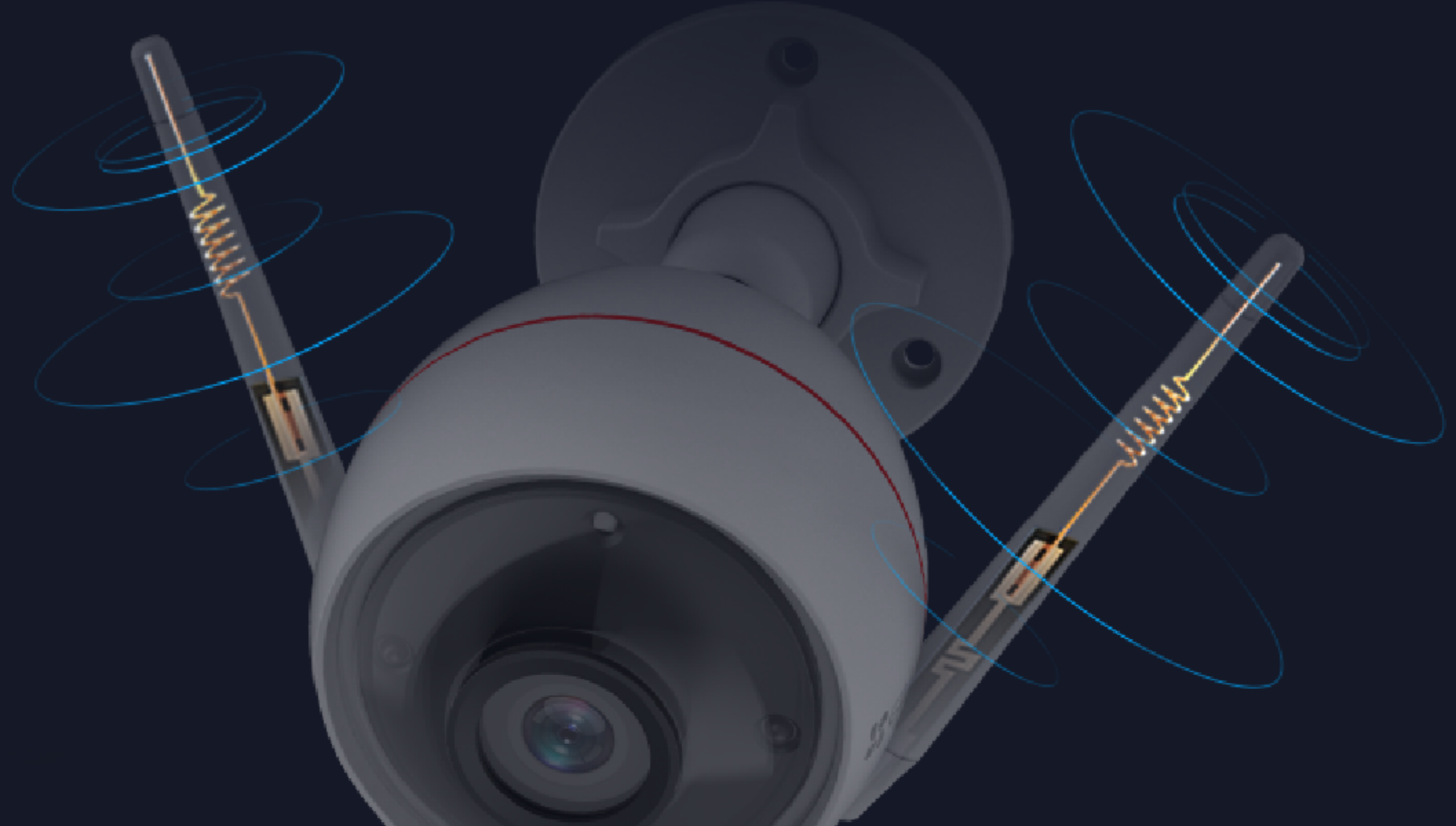
Not every outdoor security camera supports two-way communication. The camera took this function to a new height with a high-fidelity speaker and a microphone that features an ultra-long pickup range, so you can hear loud and clear. Or talk as if you were there.





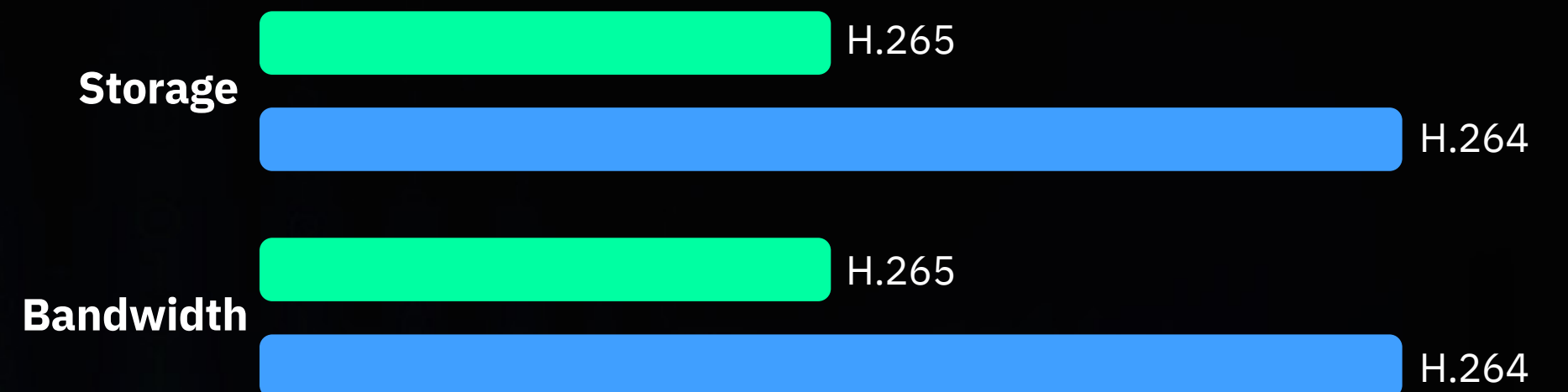
## Enhanced connection.

Boasting wall-penetration and anti-interference capabilities, the dual-antenna camera handles long-range transmission easily. Enjoy the confidence to install the camera at the front gate or in your yard while maintaining a steady and reliable connection.



## Save money on storage and bandwidth.

The camera features the advanced H.265 video compression technology, achieving better video quality with only half the bandwidth and half the storage space of the previous H.264 video compression standard.





## Resists water and dust.

---

With a whole metallic enclosure and an IP67 rating, the camera can withstand rainy, sunny, stormy, and even snowy days, giving you year-round peace of mind.



## Simple installation.

---

The camera features a 360° swivel and base so that you can install it on your ceiling or wall securely. In just a few minutes, you have a sophisticated security system.





# Specifications

## Camera

Image Sensor	1/2.7" Progressive Scan CMOS
Minimum Illumination	0.01 lux @(F1.6, AGC ON), 0 lux with IR
Shutter Speed	Self-adaptive shutter
Lens	2.8 mm @F1.6, view angle: 103° horizontal, 119° diagonal 4 mm @F1.6, view angle: 87° horizontal, 104° diagonal
Lens Mount	M12
DNR	3D DNR
WDR	Digital WDR

## Compression

Video Compression	H.265 / H.264
Video Bit Rate	Ultra-HD; HD; Standard. Adaptive bit rate.

## General

Working Temperature	-30 °C to 60 °C (22 °F to 140 °F)
Working Humidity	95% or less (non-condensing)
Power Supply	DC 12 V / 1 A
Power Consumption	Max. 6 W
IP Grade	IP67
Night Vision Distance (Black/White Night Vision Mode)	Max. 30 m (98.43 ft.)
Dimensions	72 mm × 72 mm × 150 mm (2.83" × 2.83" × 5.91")
Packaging Dimensions	252 mm × 110 mm × 92 mm (9.92" × 4.33" × 3.62")
Net Weight	352 g(0.78 lbs)

## Network

User Defined Alarm Tones	Supports
Wi-Fi Pairing Protocol	AP Pairing EZVIZ Cloud Proprietary Protocol
Interface Protocol	EZVIZ Cloud Proprietary Protocol
General Function	Anti-Flicker, Dual-Stream, Heart Beat, Password Protection, Watermark
Max. Bitrate	2M

## Wi-Fi

Standard	IEEE802.11b, 802.11g, 802.11n
Frequency Range	2.4 GHz ~ 2.4835 GHz
Channel Bandwidth	Supports 20 MHz
Security	64/128-bit WEP, WPA/WPA2, WPA-PSK/WPA2-PSK
Transmission Rate	11b: 11 Mbps, 11g: 54 Mbps, 11n: 144 Mbps

## Image

Max. Resolution	1920 × 1080
Frame Rate	Max: 30 fps; Self-adaptive during network transmission

## Interface

Storage	MicroSD card slot (Max. 256 GB)
Wired Network	RJ45 × 1(10 M / 100 M Adaptive Ethernet Port)

## In the box

- Color Night Vision Camera - Power Adapter (1.5 m)
- Mounting Template
- Screw Kit
- Waterproof Kit
- Quick Start Guide

## Certifications:

UL / FCC / CE / WEEE / REACH / RoHS

Specifications are subject to change without notice. EZVIZ is a registered trademark of Hangzhou EZVIZ Network Co., Ltd.  
Other brands and product names are trademarks or registered trademarks of their respective holders.

<https://www.ezvizlife.com/>